

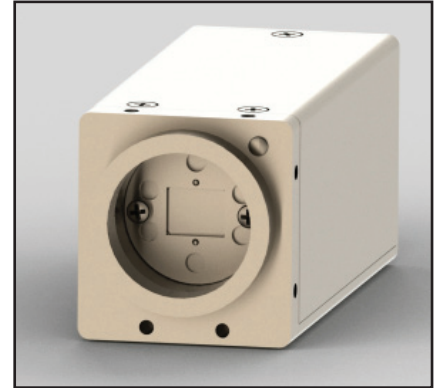
Xiris® *Xiris XVC-500 Weld Camera*



Better Images. Better Decisions. Better Process Control.

The Xiris **XVC-500** Weld Camera displays a spectacular 140+dB High Dynamic Range image directly to a standard VGA monitor. Includes a full suite of welding-specific features to provide unprecedented image quality of a variety of welding and laser processes.

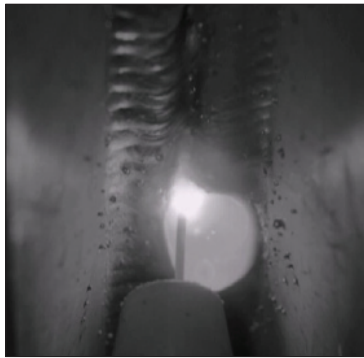
The **XVC-500** Weld Camera has been designed to economically increase welding production, efficiency, and quality. Reliable and packed with functionality, the weld camera includes a weld arc photodetector, industrialized housing and multiple mounting points.



GTAW/TIG



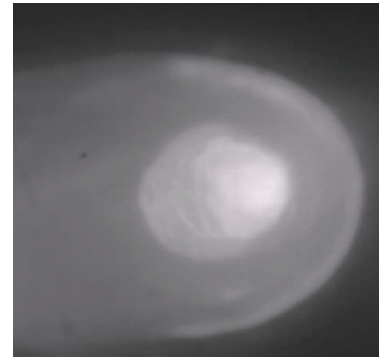
GMAW/MIG



Plasma



Laser



High Dynamic Range

With a dynamic range image in excess of 140 dB, the XVC-500 is able to acquire images with a greater range of tonal detail than any standard camera. This is particularly important for various industrial processes such as welding where there is a very bright light source in the image that needs to be seen in great detail without saturation as well as darker surrounding background features that also need to be present in the image and seen by the user.

Welding Specific Functionality

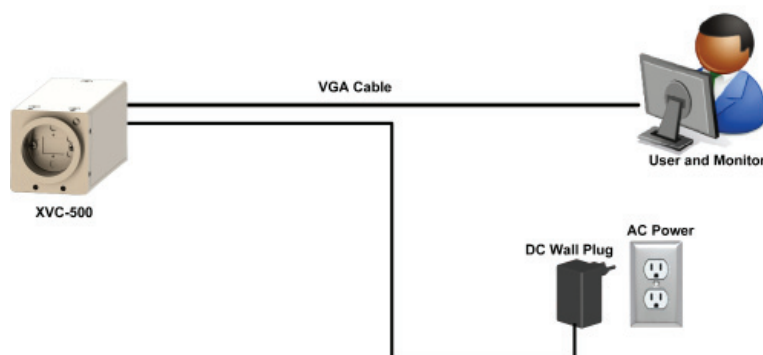
Every feature of the XVC-500 is designed to maximize usability for the welding industry, including the high dynamic range sensor, the small compact body size, the industry standard C mount lens holder, multiple mounting points, status LED and removable glass UV/IR filter system.

VGA Output

The image coming from the camera is an industry standard SXGA signal suited for optimum video transmission over long distances in an industrial environment. 12 bit ultra HDR camera video is tone mapped to an 8 bit display using our proprietary tone-mapping algorithms.

Accessories

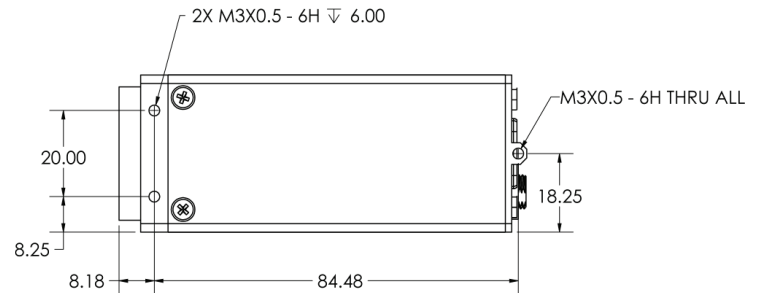
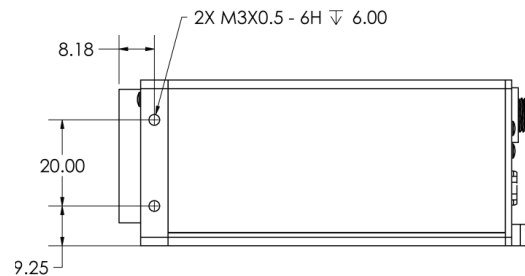
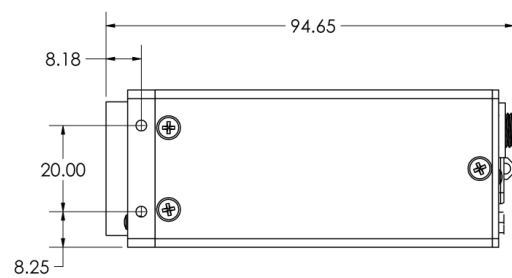
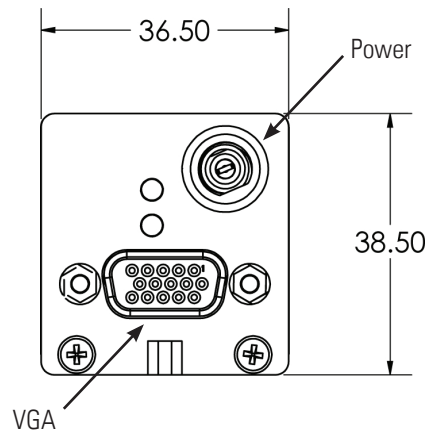
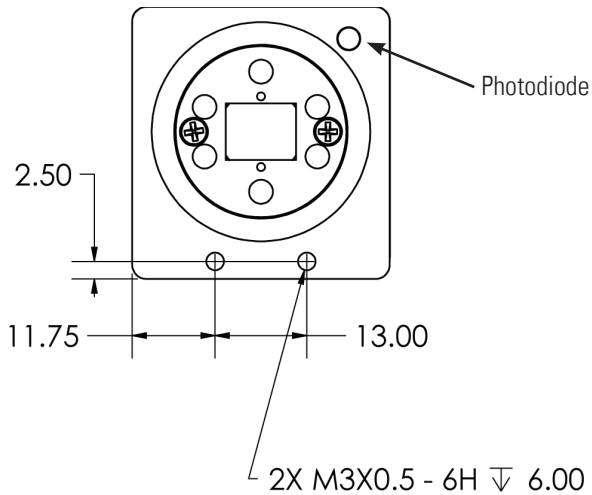
Customize your system to meet your needs. All the accessories you need to get up and running, such as display monitors, cables, power adapters, external cooling plates, industrial housings and optics can be provided on a custom basis from Xiris.



Xiris® XVC-500 Weld Camera

XVC-500 Specifications

Image Sensor	2/3" HDR Color CMOS	Compliance	RoHS
Speed/Resolution	Up to 30 FPS at 1280 (H) x 1024 (V) pixels	Shutter Range	100 μ s - 100 ms Exposure
Pixel Size	6.8 μ m square (8.7 mm x 7 mm active area)	Imaging Controls	Exposure Time, Shutter Mode
Filter	UV + IR Cut Filter	Dimensions (mm)	36.5 (W) x 38.5 (H) x 95 (L) without optics
Shutter	Global (Weld Mode) or Rolling (Non-Weld Mode)	Weight	200 g (without optics)
Dynamic Range	140+ dB	Lens Mount	C mount
Output	SXGA 1280 x 1024 pixels	Power Consumption	12 VDC nominal, maximum 6 W
Image Data	Bayer 24 RGB	Connectors	VGA, (Video) DC Jack (Power)
Max. Length - Camera Cable	Up to 40m between Camera head and display monitor	Camera Control	IR Keypad with On Screen Display (Optional)
Max. Length - Power Cable	Up to 25m between AC outlet & Camera	Temperature	Operating: 0° to 45° C, Storage: -20° to 60° C
Photodiode	Detects presence of weld arc	Humidity	Operating: 20 to 80% Storage: 20 to 95% (no condensation)



All dimensions in mm unless otherwise stated
All mounting holes are M3 threaded



Xiris Automation Inc.
1016 Sutton Drive, Unit C5
Burlington, Ontario, Canada L7L 6B8
T: +1.905.331.6660 F: +1.905.331.6661
E: sales@xiris.com www.xiris.com

Xiris Automation GmbH
Daniel-Goldbach-Strasse 19
40880 Ratingen, Germany
T: +49.2102.126.3835
E: sales@xiris.eu www.xiris.com